

# Acequia de Santa Cruz



## **Introduction**

**Location:** The Acequia de Santa Cruz is located in the center of Espanola, NM.

**Operating Unit:** The Acequia de Santa Cruz is approximately 4.5 miles in length.

**Township :** T21N R8E

**Decantation:** +8 15


**Lat:** 35 degrees, 59, 32 N

**Long:** 106 degrees, 2, 48 W



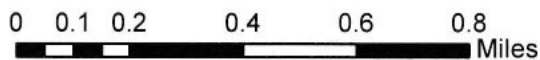
# Acequia de Santa Cruz

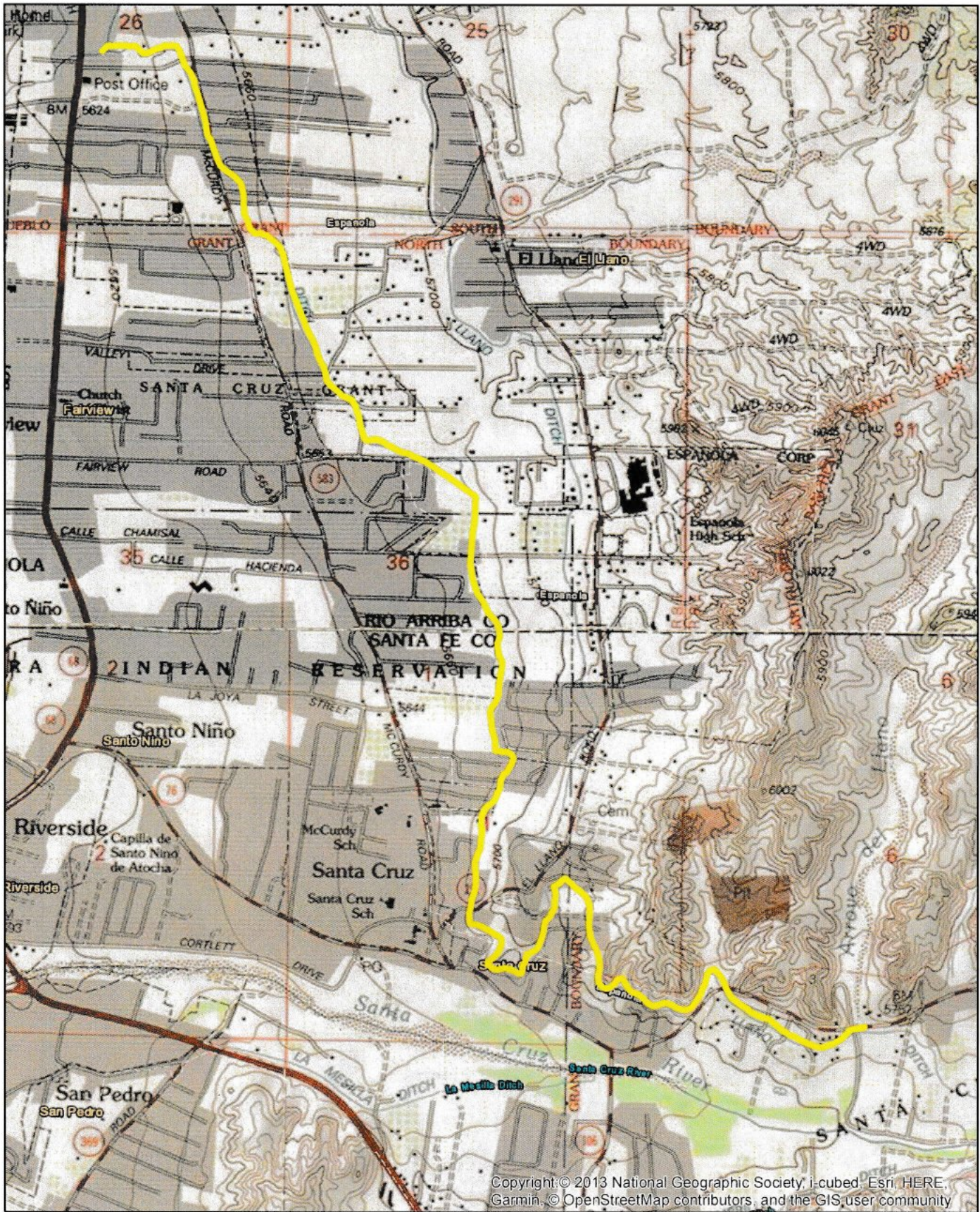
## Legend

 Acequia de Santa Cruz Line



Location Map





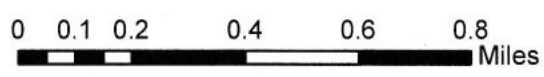
# Acequia de Santa Cruz

## Legend

 Acequia de Santa Cruz Line



Topographic Map





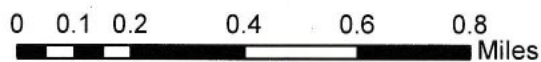
# Acequia de Santa Cruz

## Legend

- Acequia de Santa Cruz Inventory Points
- Acequia de Santa Cruz Line



Inventory Map

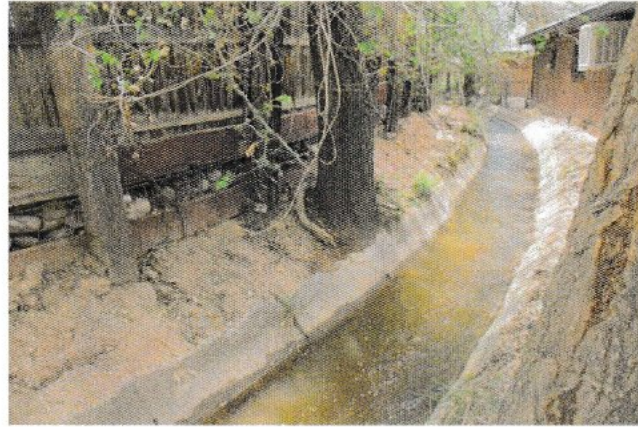


Ident	Description	Culvert	Turnout	Picture #
401	Beginning of Acequia			1102-1106
402		22" Culvert		1107
403	Diversion Gate from Acequia Madre			1108-1111
404	Clean Out			1112-1116
405	Check-gate		1' TO	1117-1119
406	Culvert Crosses Under Driveway to Camino De Paz	70' Culvert		1118-1119
407				
408	Sediment Build Up		1' TO	1120
409	Desagua Into Rio Grande			1121-1125

## Resource Inventory:

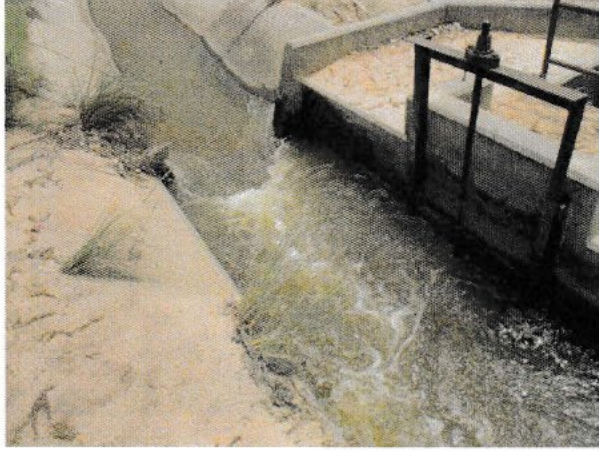


Waypoint 402



Waypoint 401

*The images above depict areas of The Acequia de Santa Cruz that have been lined with concrete walls to prevent erosion, reduce the amount of water lost to surrounding vegetation and ensure the allocation of water per irrigator. Minor damage to the design has developed and future maintenance should be considered to ensure the workmanship of the Acequia.*



Waypoint 403



Waypoint 404

*The combination structure above facilitates a rapid change in elevation and is engineered to prevent the occurrence of erosion by implementing a composite of concrete. The infrastructure also has a check-gate to divert the accumulated sediment and ensure the efficiency of water flow.*

## Resource Concerns:



Waypoint 405



Waypoint 406

*The first photo taken at waypoint 405 depicts irrigation water traveling through three underground culverts. Debris has enabled the movement of water flow in the middle culvert. Waypoint 406, shows the damage that has occurred and is causing leakage within the first culvert. All three culverts are approximately 70 feet in length and are in need of replacement.*